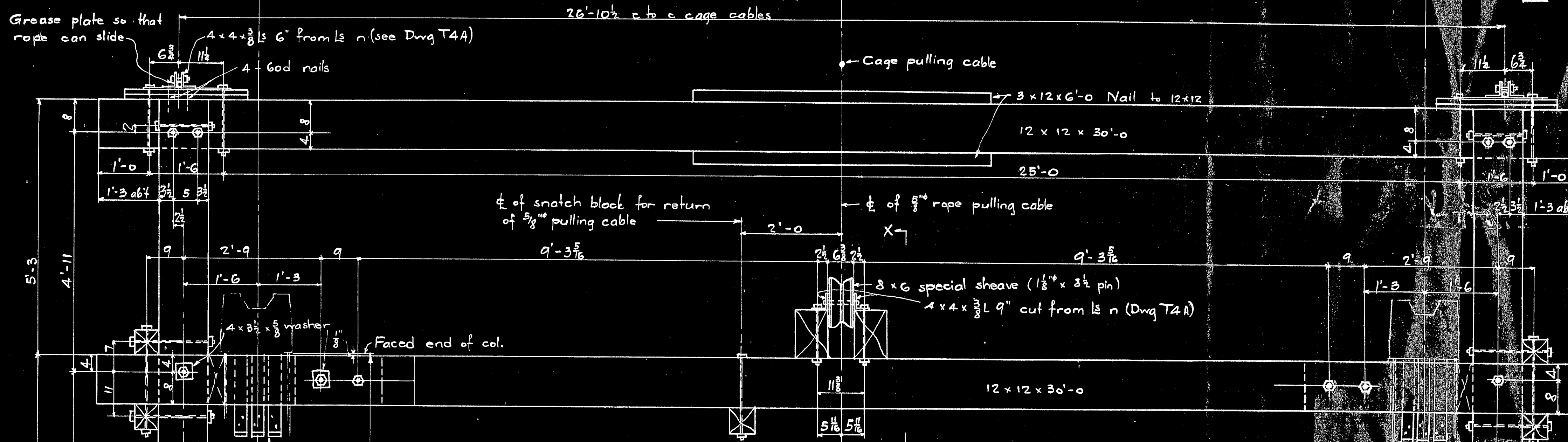
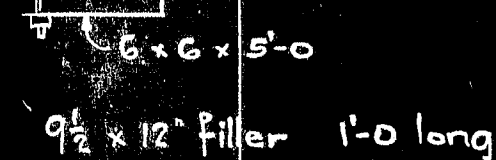


Section X-X



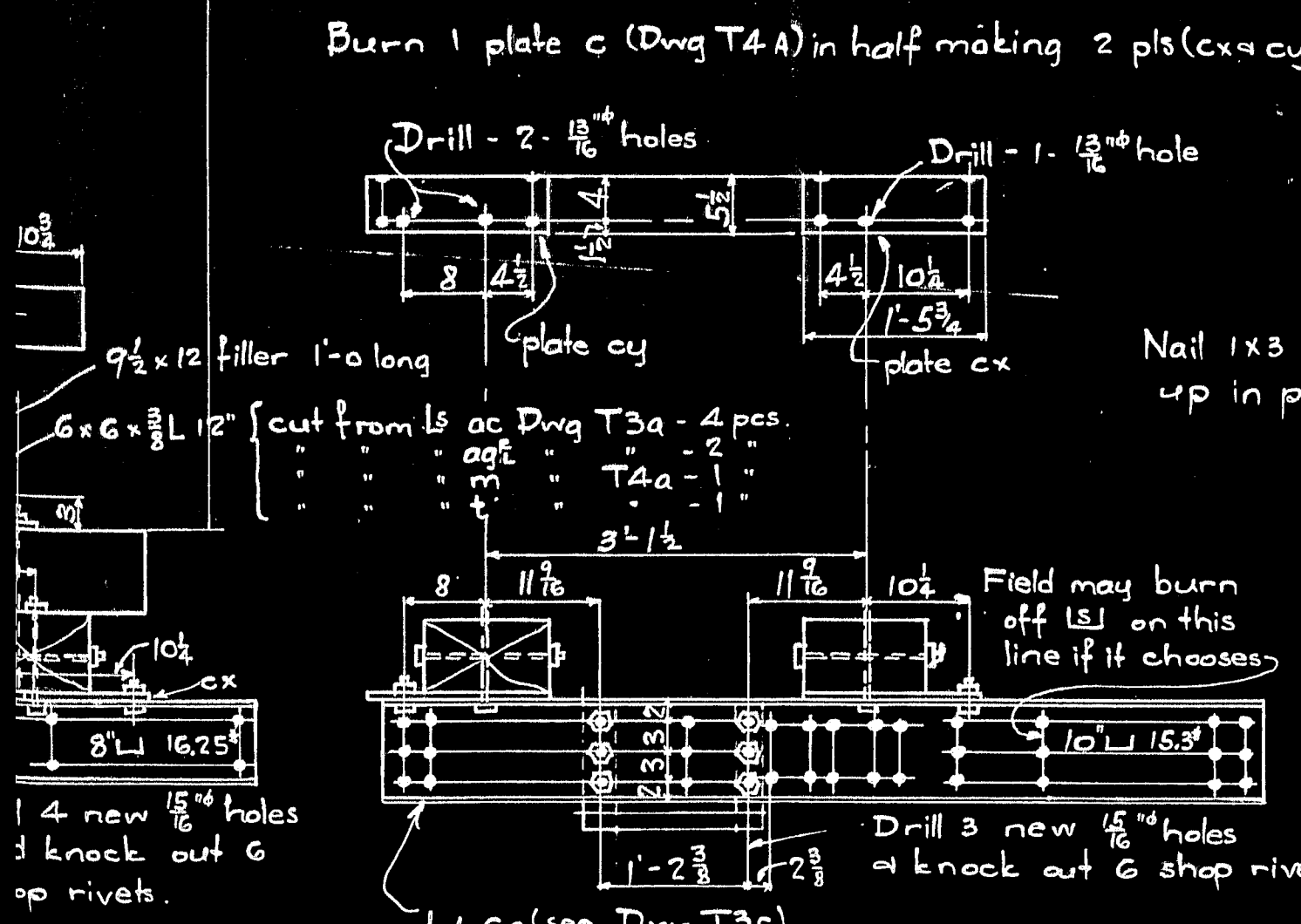
26'-6 c to c bents abt

List of Mat'l. for 2 Bents

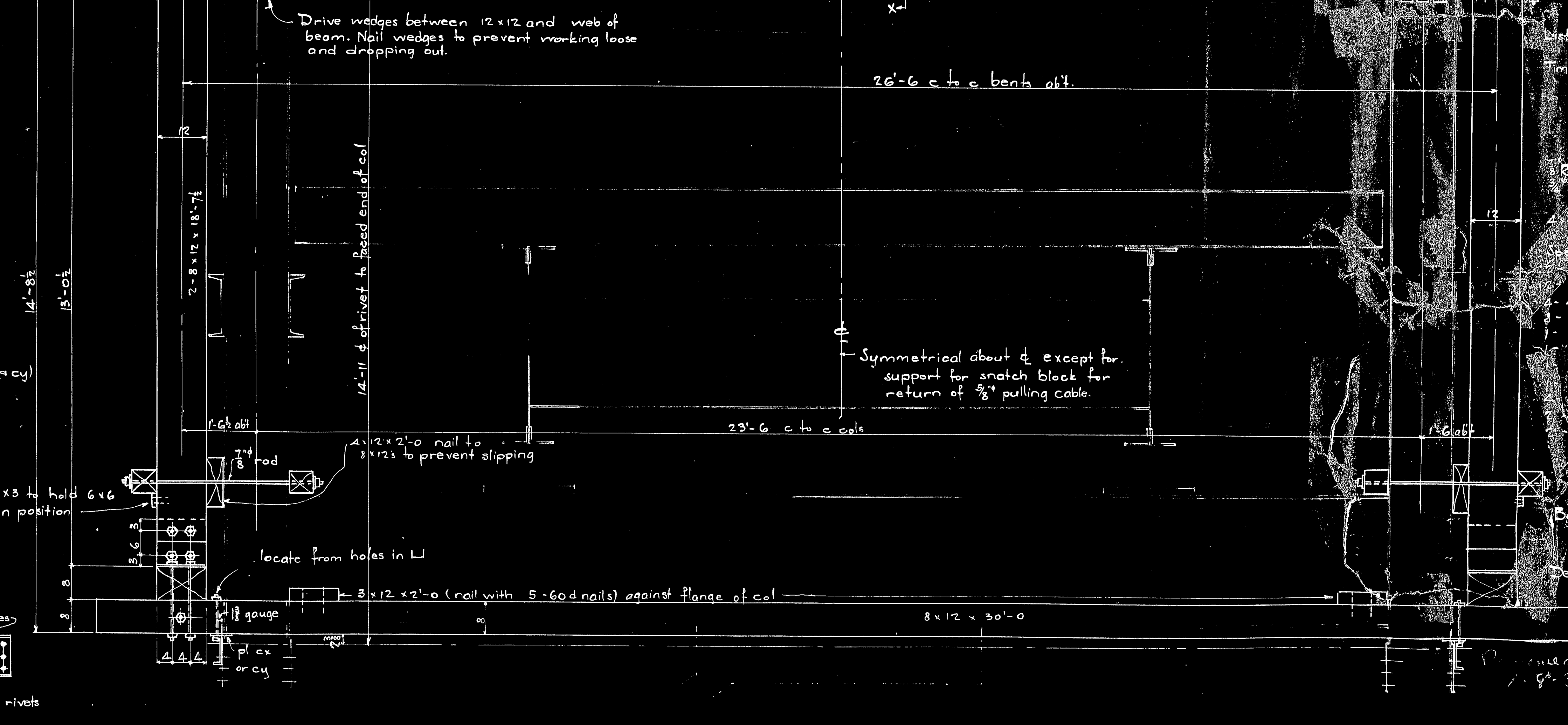
Timber 12 x 12 6/32
 10 x 12 10/11
 8 x 12 4/32, 8/18-17, 8/11-9, 4/5, 4/4
 6 x 6 16/5, 2/4
 4 x 12 8/2, 4/2-6
 3 x 12 8/2
3 Rods 3/32, 8/50 { mate 2 from 7 rods }
3 Bolt 8/28, 16/27, 16/25 1/2, 8/21, 20/19 1/2,
 9/18 1/2, 10/18, 20/13 1/2, 8/10 1/2, 16/7 1/2
4 3/2, 5/8 washers - 32 - for 7/8 rods

Special Structural Pieces

2 1/8" Pins 8 1/2
2 x 6 special sheaves
2 4 x 4 x 8 1/2 9" cut from 15 n (Dwg T4A)
3 4 x 4 x 8 1/2 6" " " " "
1 Plate "fo" (Dwg T3D) Drill 4 bend.
 "fo"
 "ed"
 "of"
4 Plates "c" to make 8 pas (Dwg T4A)
2 1 1/2" a (see Dwg T3A)
2 1 1/2" ca (" T3C)



"a" at one rocker bent and "ca" at other rocker bent



Bent to Support Cage Cables
at Cable Bents.
Deer Isle - Sedgwick Bridge

The Phoenix Bridge Co.
Erection Dept.
Engineer R. S. Foulds
Draftsman J. P. Wagoner
Scales $\frac{3}{4}$ " = 1' = 1'-0"
Date Sept. 2, 1938.

Examined & approved

Supt. of Erection

C.O. 457 Dwg CG

